

News Release

Nashimoto & Associates
1833 Kalakaua Avenue, Suite 201
Honolulu, Hawaii 96815
Phone: (808) 955-9361 Fax: (808) 955-9742
Email: info@nashimoto.com

Contact: Dr. Alan Wu, M.D.
Dr. Tony Trpkovski, M.D.
Doctors of Waikiki
Sheraton Princess Ka'iulani Hotel, Ground Floor
120 Ka'iulani Avenue, #KW10&11
Honolulu, HI 96815
Office: (808) 922-2112
Email: info@doctorsofwaikiki.com
www.doctorsofwaikiki.com

Maui County Post-Arrival Covid-19 Testing Program for all Trans-Pacific Travelers Ends June 4th, 2021



**DR. ALAN
WU, M.D**

**DR. TONY
TRPKOVSKI, M.D.**

Honolulu, HI (June 4th, 2021) - After nearly a month of Post Arrival Covid-19 Testing on Maui, Doctors of Waikiki tested over 90,000 travelers (38,000 were exempt after showing proof of vaccination). From those tests, the positivity rate for confirmed cases of Covid-19 is very low at 0.0054%. Of the 29 rapid antigen tests, confirmatory tests showed 5 positive results: 3 visitors and 2 returning residents. The consistent results below a 1% positive rate show that the risk of travelers bringing the Coronavirus into the island was overstated.

Mahalo Mayor Victorino, Maui County, all of the visitors, and our hard-working staff for helping us make the Maui Post Arrival Testing Program a success. Our results show that the majority of travelers coming to Maui do not have the virus. We also found that many visitors were happy to have a Covid Test when they arrived to protect their own family and the Maui community.

The data we've gathered from this program illustrates that the vast majority of Americans are getting vaccinated and the rate of infection is lower than we think. Without this program, we would be unable to come to this conclusion. Once again, we commend the Mayor, Maui County, and their Partners for being proactive in protecting Maui's residents and visitors.



The Maui Post-Arrival Testing Program will conclude on June 4, 2021. Please visit mauicounty.gov for more info and watch the press conference with Dr. Wu and Mayor Victorino on [facebook.com](https://www.facebook.com).

*Please note, the number of exempt travelers who showed proof of vaccination was over 38,000. During the press conference, an incorrect statistic was given. Mahalo!

The advantages of getting tested at Doctors of Waikiki versus other non-medical testing facilities is that Doctors of Waikiki can provide test results in 20 minutes. If you do test positive, Doctors of Waikiki can treat you. If you do test positive through a non-medical testing facility, you will need to find a licensed medical provider, like Doctors of Waikiki, to treat you. And depending upon the test as taken at the non-medical testing facility, you may need to be re-tested to insure the right diagnosis and treatment. Doctors of Waikiki can also provide same visit completion of form and proof of negative certificate, as required for travel, all in one appointment. Keep Hawaii safe, prevent resurgence of COVID-19. Protect your work, family and peace of mind.

Doctors of Waikiki performs ALL Covid-19 Related FDA/EUA Approved Tests Onsite as now a moderate-complexity CLIA lab:

COVID-19 Test

Nucleic Acid Amplification Test (NAAT) Covid-19 Test

Nucleic Acid Amplification Test (RT-PCR) (With Same Day Results)

Nucleic Acid Amplification Test (LAMP) (With Results in 20 minutes)

Next Generation Sequence, Quantitative Antigen Test (CLEIA) (With Same Day Results)

VENOUS SEROLOGY ANTIBODY COVID 19 Test

WHOLE BLOOD ANTIBODY COVID 19 Test

Partnered with Clinical Labs Hawaii and Diagnostic Labs Hawaii who are Trusted Partners

***Required to provide ID and proof of insurance.**



For Japanese Nationals Traveling Back to Japan (Trusted Partners of Japan) and other International Travels, Doctors of Waikiki is Certified as a member of the International Air Transport Association (IATA) Travel Pass.

Hard copy of certificate or digital certificate via IATA application is provided same day

For Hawaii Safe Travels Program:

Doctors of Waikiki is in partnership with DLS and CLH lab to provide inter-county travel COVID-19 results 48-72 hours prior to inter-island travel

In-Clinic Ongoing Testing Extended to August 31st, 2021 from 9:00 am to 11:00 pm Daily

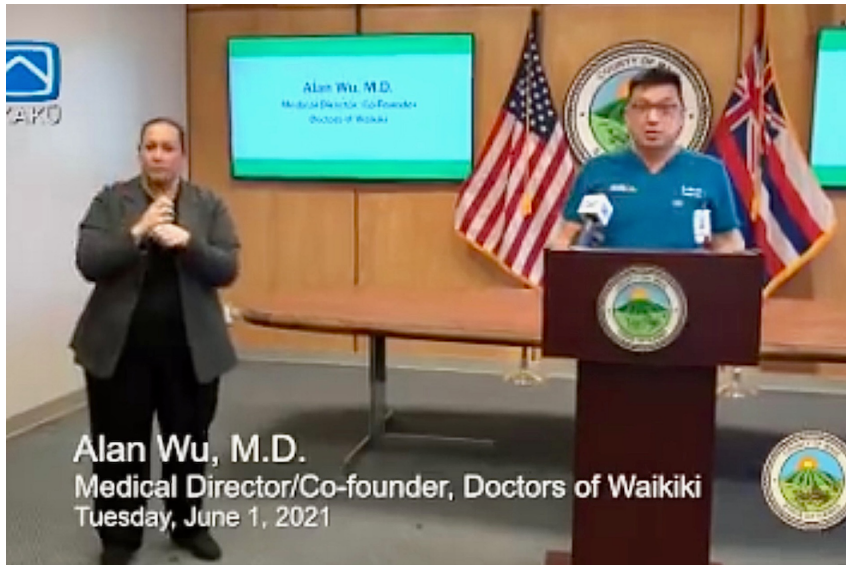
Testing, testing, testing and public support is important on our road to recovery for the State of Hawaii," say "Doctors of Waikiki."

Doctors of Waikiki are also offering COVID-19 risk assessment, mitigation consulting, training and expertise by licensed medical practitioners and has helped educate over 150+ business owners (hotels, restaurants, retail businesses, schools, churches, travel, transportation, activities, attractions, tourism and hospitality industry, etc.) to do their part to protect the wellness of their staff, family members and customers and to reduce the spread of COVID-19.

By appointment only. Please schedule your appointment on [doctorsofwaikiki.com](https://www.doctorsofwaikiki.com). No doctor's referral is needed. Please find a list of participating insurance providers at [doctorsofwaikiki.com/insurance](https://www.doctorsofwaikiki.com/insurance).



Dr. Alan Wu, M.D., Medical Director/Co-Founder, Doctors of Waikiki with Maui Mayor Mr. Michael Victorino

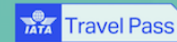


Dr. Alan Wu, M.D., Medical Director/Co-Founder, Doctors of Waikiki at Press Conference in Maui with Maui Mayor Mr. Michael Victorino



COVID-19 TESTING

EXTENDED TO AUGUST 31ST



ALL FDA/EUA Approved Tests

NAAT Real-Time Test Results in 20 mins!
Only Available Here!

Nasopharyngeal PCR Test
IN ASSOCIATION with TRUSTED
PARTNERS (Clinical Labs Hawaii &
Diagnostic Labs Hawaii)

*Turn around time for
TRUSTED PARTNERS is 24-48 hours*

All tests are administered by
healthcare professionals. None of
our tests are self-administered.

Research has shown that tests
administered by providers are
more effective at detecting than
self-administered tests.

Same-Day Appointments Available

Multiple Appointment Slots

BY APPOINTMENT ONLY | SCHEDULE ON [DOCTORSOFWAIKIKI.COM](https://www.doctorsofwaikiki.com)



Testing for Travel - Although your insurance may cover Covid-19 Testing if you are symptomatic or have known exposure to the virus, insurance does not cover Covid-19 Testing for Travel. The full cost of the test is the patient's responsibility. The out-of-pocket cost for the PCR/Antigen Tests are \$300 + tax and the Antibody Tests are \$160 + tax. They plan to share the information they collect during this ground-breaking testing with the Department of Health so they can see how they can get segments of the population back to work ASAP. Hawaii is one of the hardest hit states economically in America as a result of this pandemic due to our heavily dependent travel industry and the state's tourism industry is taking a massive hit due to the travel restrictions.

They ask for your patience and your support.



Doctors of Waikiki meeting with Maui County Mayor Michael P. Victorino



Dr. Alan Wu, M.D., Co-Founder and CEO of Doctors of Waikiki in Maui to Meet with Maui County Mayor Michael P. Victorino



Dr. Alan Wu, M.D., Co-Founder and CEO of Doctors of Waikiki in Maui
With Marvin Moniz, Maui Airport Director



Dr. Alan Wu, M.D., Co-Founder and CEO of Doctors of Waikiki at Maui Kahului Airport with News
Reporter Chelsea Davis of Hawaii News Now

GENERAL PUBLIC:

Please visit to schedule your appointment online:

<https://www.doctorsofwaikiki.com>

SCHEDULE FOR TESTING

-In-Clinic Testing **(Extended to August 31st, 2020, from 9:00 am to 11:00 pm daily)**

SCHEDULE APPOINTMENT ONLINE

-Please schedule your appointment online at [doctorsofwaikiki.com](https://www.doctorsofwaikiki.com). We are offering multiple appointments at the same time each day. *** TESTING IS BY APPOINTMENT ONLY ***

PARKING

IN-CLINIC TESTING (PARKING)

The Sheraton Princess Ka'iulani Hotel has reopened. We validate for the 1st hour.

There is also street parking along the Ala Wai

VERIFICATION

Your insurance will also be verified before your appointment. Testing for COVID-19 and the services being rendered will be billed to your insurance company.

PARTICIPATION INSURANCE AND VERIFICATION

Please visit our website at [doctorsofwaikiki.com](https://www.doctorsofwaikiki.com) for a complete listing of our participating health insurance plans. HMO plans require an authorization or referral in order to be treated by our healthcare providers. You must obtain an authorization or referral approval form from your health insurance prior to scheduling your appointment. Doctors of Waikiki is not participating with all Quest and Medicaid Plans. The patient is responsible for knowing their health insurance policy. Please contact your health insurance directly to obtain more information on your health insurance benefits. Doctors of Waikiki Urgent Care clinic will check for insurance eligibility and benefits prior to your appointment.

A healthcare provider will conduct the testing. Testing will be rapid antibody with or without nasal pcr swab as determined by the medical provider.

PLEASE BRING THESE TO YOUR APPOINTMENT:

-Insurance Card

-Driver's License or ID

-Face Mask * REQUIRED * (Please make sure that you and whoever is in the vehicle with you is wearing a face mask)

* Inadequate ID and insurance will result in the cancellation of your appointment and you will have to recreate appointment form on line. Test kits are limited. *



We also ask that you please adhere to the state's order to practice social distancing and to wear personal protective equipment (face masks) during the in-clinic testing. This mandatory rule is intended to further stop the community spread of the Coronavirus in Hawaii. They also ask that you please adhere to the state's order to practice social distancing and to wear personal protective equipment (face masks) during the in clinic testing.

THANK YOU

Thank you for your cooperation and helping us defeat COVID-19 with the Doctors of Waikiki TTTP PLAN:

TESTING - mass testing of the entire state to discover who has COVID-19 now or has had it and recovered.

TREATING - People that test positive and don't require hospitalization should separate themselves from other people and pets in their home. They should stay in a specific "sick room" if possible, and away from other people and pets in the home. Use a separate bathroom, if available.

TRACKING / TRACING - health workers need to be able to trace the recent close contacts of everyone who tests positive and have them go into isolation or quarantine until it's determined they're not infected.

PUBLIC SUPPORT - The only way to defeat COVID-19 is by working together. For instance, we should all follow the CDC's new recommendation of wearing non-medical grade masks whenever we leave home to help slow the spread and we should also be adhering to Hawaii's Stay-at-Home Work-at-Home order. If we work together we can beat this.

DOCTORS OF WAIKIKI

[120 Ka'iulani Avenue](#), Suite KW10&11

Honolulu, Hawaii 96815

(808) 922-2112

covid19@doctorsofwaikiki.com

To our local and visiting Ohana, we at "Doctors of Waikiki" want to take a moment to send you a note of encouragement during this challenging time. We are at the front lines of the Novel Coronavirus (COVID-19) outbreak and want to first thank all our staff who come in every day ready to give the highest level of care and attention to our patients. Secondly, we would like to let you know that we are monitoring the ever-changing situation and are in contact regularly with state health agencies.

There is a vaccination, we encourage everyone to get vaccinated. The virus is thought to spread mainly from person-to-person who are in close contact with one another (within about 6 feet). It spreads through respiratory droplets produced when an infected person coughs or sneezes. These droplets can land in the mouths or noses of people who are nearby or possibly be inhaled into the lungs.



The following symptoms may appear 2-14 days after exposure: Fever, Cough & Shortness of Breath. We also take into account your exposure history and travel history when evaluating our patients.

The best thing that you can do for yourself and your Ohana is to follow the [cdc.gov](https://www.cdc.gov) guidelines: 1) Social distancing of 6 ft. 2) Wash your hands often with soap & water for at least 20 secs 3) Don't touch your face (nose, mouth or eyes). For more info visit [cdc.gov](https://www.cdc.gov). We are offering CORONAVIRUS TESTING and/or Flu Testing. We have flu shots so if you haven't been vaccinated yet please come in. Don't Wait. We are open every day from 8 am to midnight. Our staff is bi-lingual (English, French, Spanish, Japanese, Korean, Chinese and Slavic). Wait times are less than 15 mins. No appointment is necessary. We also offer courtesy pick-up and drop-off if you are in the #Waikiki area.

Stay strong and safe everyone. We will get through this. Mahalo, Dr. Alan Wu, M.D. and Dr. Tony Trpkovski, M.D. of "Doctors of Waikiki." Immunization is a simple and effective way of protecting yourself and your family. Immunization works by triggering the immune system to fight against certain diseases. If a vaccinated person comes in contact with these diseases, their immune system is able to respond.

"Doctors of Waikiki" opened the largest, most advanced Urgent Care in the State of Hawaii on December 1, 2018 at the Sheraton Princess Ka'iulani Hotel in Waikiki located on the ground floor at 120 Ka'iulani Avenue. The new 5,000 square foot location has the newest state-of-the-art technology with vein finder, digital x-ray (offering immediate results), in-house lab with results in 15 minutes (for blood chemistry, blood count, liver, lipids, urinalysis, influenza, rsv, strep and many more), in-house pharmaceutical dispensary, IV (intravenous therapy) for normal hydration, multi-vitamin infusion, detox, anti-aging and immune boost IV.

Courtesy complimentary transportation service between Waikiki hotels to/from Doctors of Waikiki.

Doctors of Waikiki is the largest and most fully staffed Urgent Care in Waikiki. 90% of all employees (nurses, other medical staff, client service representatives, reception, administration and others) are qualified and experienced (bilingual) English, French, Spanish, Japanese, Chinese, Korean and Slavic speaking. They will offer courtesy complimentary transportation service between Waikiki hotels to/from Doctors of Waikiki as well as provide House/Hotel room calls in Waikiki and shall be the only Urgent Care in Waikiki open until midnight daily. "We both have decided to sacrifice our personal time and stay open until midnight daily to provide Urgent Care services currently not available but needed in Waikiki during late night hours. Hopefully our Urgent Care services can also decrease the burden of non-emergency visits to the ER coming from patients coming from Waikiki," says Dr. Alan Wu and Dr. Tony T. of Doctors of Waikiki.



Insurance Accepted: All major insurance including travel insurance is accepted
(Universal Health Care)
(Japanese overseas travel insurance included with JCB credit card)

Payments Accepted: All major credit cards accepted
Currency: U.S. Dollar and Japanese Yen

About "Doctors of Waikiki"

Dr. Alan Wu, MD.

Internal Medicine

Physician at Straub Clinic and Hospital, Hawaii Pacific Health
2015-2018

Medical School: University of Hawaii

Residency: National Capital Consortium Walter Reed Hospital, Washington D.C. - Internal Medicine
15-years military experience

Awarded U.S. Army Aviation Association "Aviation Medicine Award of the Year 2017"

Awarded U.S. Army "Meritorious Service Medal" 2013-2017, 25th ID, US Pacific Command

Awarded U.S. Army "Bronze Star" 2010-2011, 101st Airborne DIV, Afghanistan

Brigade Flight Surgeon

Chief of Aviation Medicine Department

US Army
2013-2017

Major

US Army
2002-2017

Assistant Chief, Internal Medicine Clinic Tripler Army Hospital

US Army
2012-2013

Resident Physician

Walter Reed Army Medical Center
2007-2010

Dr. Tony Trpkovski, MD.

Internal Medicine

Physician at Straub Clinic and Hospital, Hawaii Pacific Health
2012-2018

Chief of Medicine - Internal Medicine

Kauai Medical Clinic
2005-2012
Awarded "Best Doctor" in Kauai

Internal Medicine

Gulf Medical Clinic
2005-2006

Hospitalist

Synergy Medical Group
2005

CEO/Internal Medicine

Trpkovski Primary Care
2002-2005

Internal Medicine

Primary Care of Venice
1997-2002

Internship and Chief Resident in Internal Medicine

Wright State University
1994

Medical School



Saints Cyril and Methodius University Medical School in Skopje, Macedonia
1993

Full Scholarship
1984-1992

National Board Certified in Internal Medicine

Focus on Improving Health

"The new "Doctors of Waikiki" Urgent Care, will offer the highest quality medical care in Waikiki. Whether you live or work in Waikiki, or visiting, "Doctors of Waikiki" can provide you with your health care needs.

"Doctors of Waikiki" offers a full range of medical care, including Urgent Care, physician services, laboratory and x-ray. In addition, "Doctors of Waikiki" offers a full range of occupational health services such as contracted pre-employment physical examinations, drug tests, worker's compensation care and immunizations for adults. Our physicians at "Doctors of Waikiki" are assisted by a full staff of nurses, accredited technicians, patient service representatives and Japanese/English bilingual translators.

"Doctors of Waikiki" is NOT an emergency room. If you believe that you have an emergency, you should call 911 or go immediately to the closest hospital emergency room.

Services include:

- Courtesy complimentary transportation service between Waikiki hotels to/from Urgent Care
- House/Hotel room calls
- Diagnosis and treatment of illness and injury including work-related injuries
- Contracted pre-employment physicals and drug screenings
- Immunizations for adults
- Complimentary validated parking
- Ages of patients seen 2 yrs old - 100 +
- Pharmaceutical dispensary
- In-house lab with results in 15-45 minutes (for blood chemistry, blood count, liver, lipids, urinalysis, COVID-19 influenza, rsv, strep, Chlamydia, gonorrhea and many more)

"Doctors of Waikiki" accepts major insurance plans, including contracted overseas travel insurance, HMSA (Blue Cross & Blue Shield), HMAA, UHA, Aetna, Cigna, Tricare, MDX, Medicare and more.

Location:

Doctors of Waikiki
Sheraton Princess Ka'iulani Hotel, Ground Floor
120 Ka'iulani Avenue, #KW10&11
Honolulu, HI 96815
Office: (808) 922-2112
Email: info@doctorsofwaikiki.com
www.doctorsofwaikiki.com

Hours of Operation: 8:00 am - 12:00 am midnight (Open Daily)